

Logistics and Need For Sperm Banking

UF Health HOPE Network

Alice Rhoton-Vlasak, MD

REI

UF Reproductive Medicine at Springhill

352 -265-6200



It's About Talking and Teamwork



[UF Health Reproductive Medicine Clinic](#)

Goals

- To review who might bank
- To discuss the guidelines supporting this service
- To discuss how it is done
- To review the future uses
- To review the barriers and costs
- To review the referral process

Definitions

Fertility Preservation

- Preserving reproductive ability due to fertility altering therapies for benign conditions or for social reasons

Oncofertility

- Preserving reproductive ability before cancer treatments that could alter fertility



UF Health HOPE Network

Helping Oncology Patients become Educated

Alice Rhoton-Vlasak, Director , REI

Stan Williams, REI

Greg Christman, REI

Jean Melby – REI clinical nurse liaison

Joe Kramer –REI embryology/ lab director

Nash Moawad, MIGS surgeon

Dr. Islam – Pediatric surgeon

Lauren Staley , Inpatient Nurse Navigator

Joanne Lagmay- AYA director

Patricia Durning –psychologist

Climb for Cancer Foundation – grant funding partners for clinical and educational programs

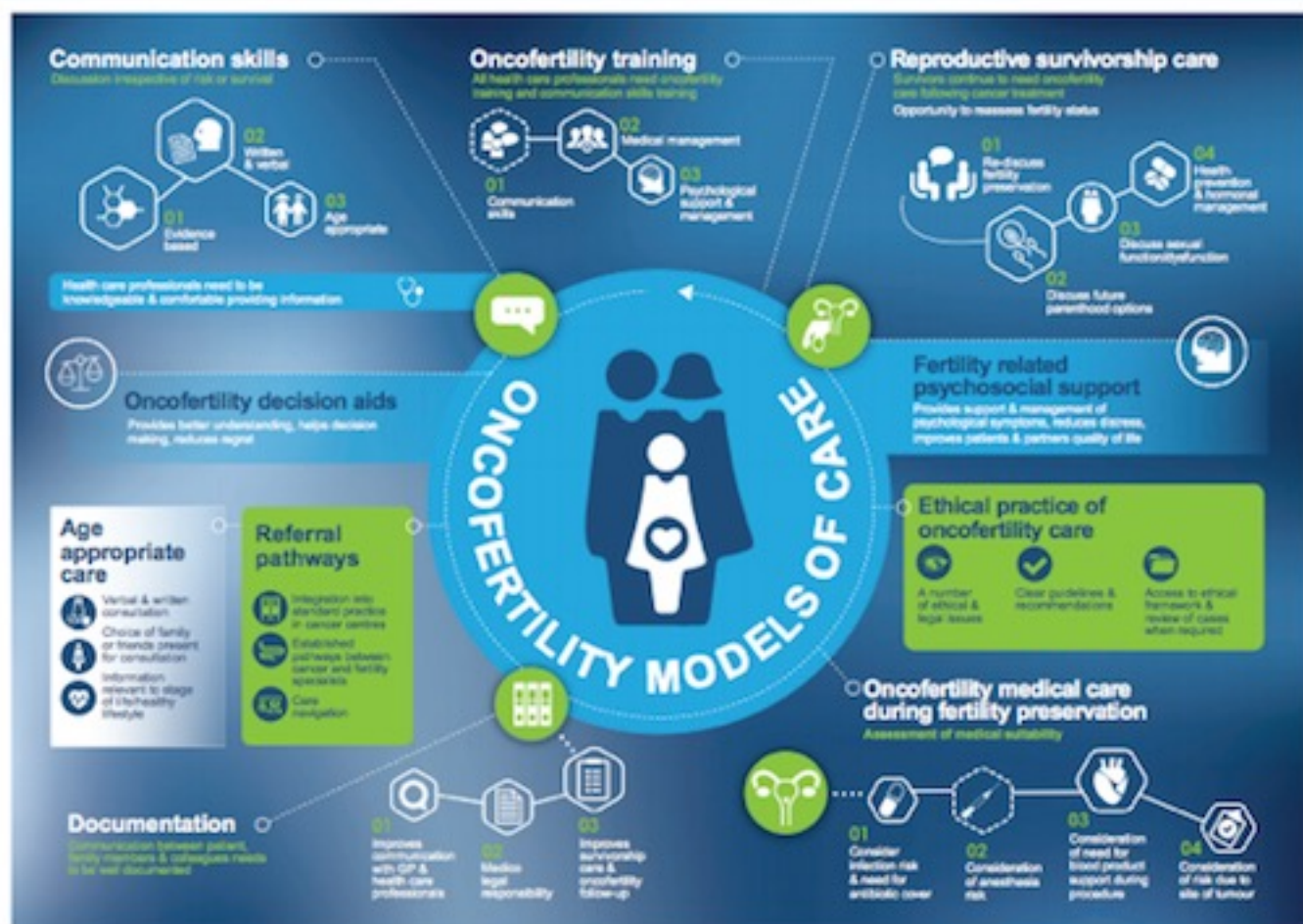


Figure 2 Successful components of an oncofertility model of care.

Oncofertility

Cancer Related Reasons:

Low risk subfertility (20%)	Medium risk	High risk subfertility (>80%)
ALL	AML	Whole body RT
Wilm's tumor	Hepatoblastoma	Pelvic RT
Soft tissue sarcoma (I)	Osteosarcoma	Chemo for BMT
Germ cell tumor (No RT)	Ewing sarcoma II or III	Hodgkin's treated with alkylating agents
Retinoblastoma	NH-lymphoma	Sarcoma IV
Brain tumor	Hodgkin's ,alternating treatment	Metastatic Ewing Sarcoma
	Brain tumor (RT)	
	BREAST CANCER	

Fertility Preservation

Non-cancer reasons:

BMT	Autoimmune requiring CT	Ovarian pathologies	Endocrine/genetic diseases
	Vasculitis		
Sickle cell anemia	SLE	Recurrent cysts	Turner syndrome
Thalassemia major	Rheumatoid arthritis	Torsion	Galactosemia
Aplastic anemia	Behcet's disease		Family hx of POF
Autoimmune dx	Wegener's disease		
	Multiple sclerosis		

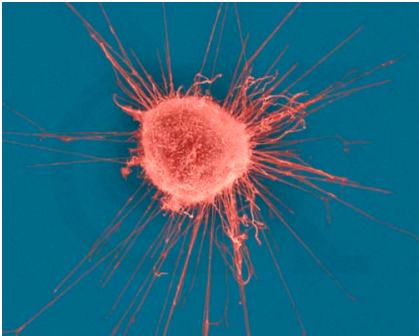
Transgender or Social Reasons

ASCO/AAP/ASRM/COG Guidelines

(Lee et al, JCO, 2006: 2917-2930; Fallet et al, Peds,2008:e1461-1469, reaffirmed and Updated 2013, ASRM 12/2019; COG 1/19)

- As part of informed consent prior to therapy, physicians should address the possibility of infertility with patients
- Referral for interested patients to reproductive endocrinologists (REI)
- Discussion at the earliest possible opportunity
- Sperm, oocyte, and embryo, and **NOW Ovarian tissue** cryopreservation are standard practices, other methods are investigational – only for centers with expertise

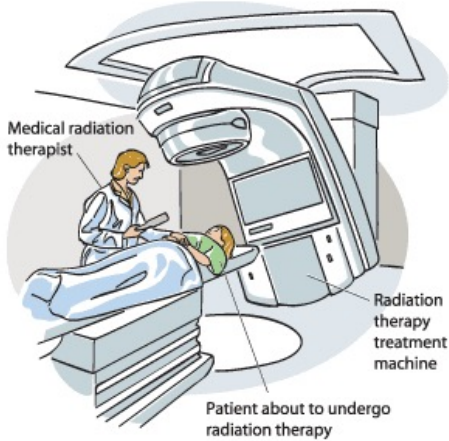
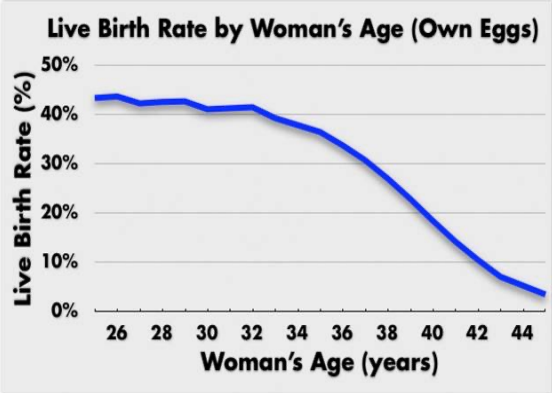
Disease Impacts



Patient



Lose germ cells/hormones



Erectile dysfunction
Loss of gonads
Impair hormone release

Germ cell depletion
Hormone loss
Uterine damage

Typical Case

- 18 year old male diagnosed with testicular cancer, and wants to have children in the future.
- He will get surgery and possible chemotherapy
- Should he bank? Can he bank?

UF Health FP Consult Numbers

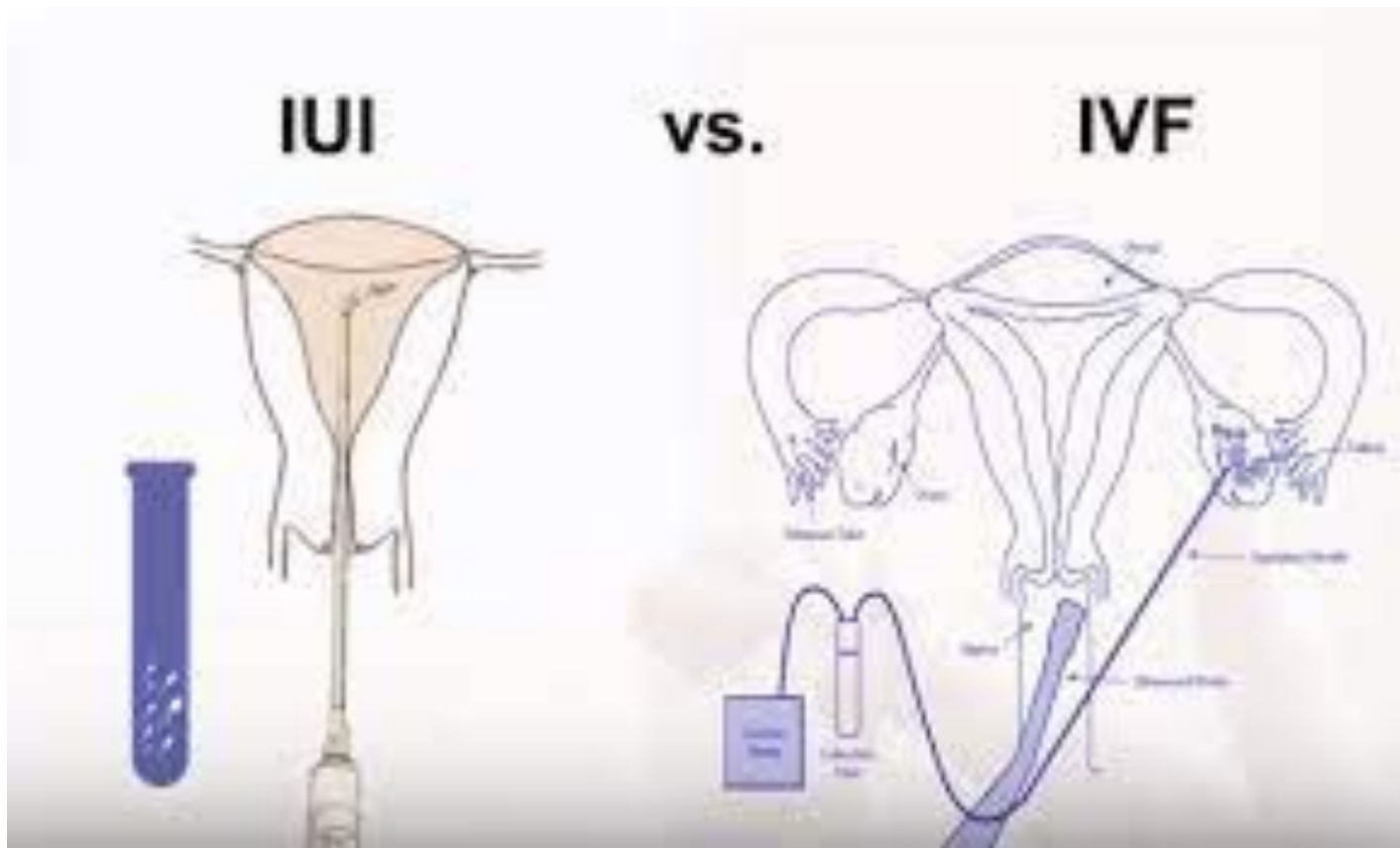
- We see about 10% of oncology patients 0-40 years of age.
- More males than females
- Limited by time, cost, and access
- RARE insurance coverage so all out of pocket
- Now have an Inpatient navigator- Lauren Staley

How?

- Meet with physician at Springhill or Lauren Staley (inpatient navigator)
- Sign 2 consents
- Collect sample by ejaculation into a cup
- Family member will deliver sample if inpatient
- Analysis performed and sample frozen in vials for intrauterine insemination (IUI) or In vitro fertilization (IVF)
- Long term storage at Reprotech

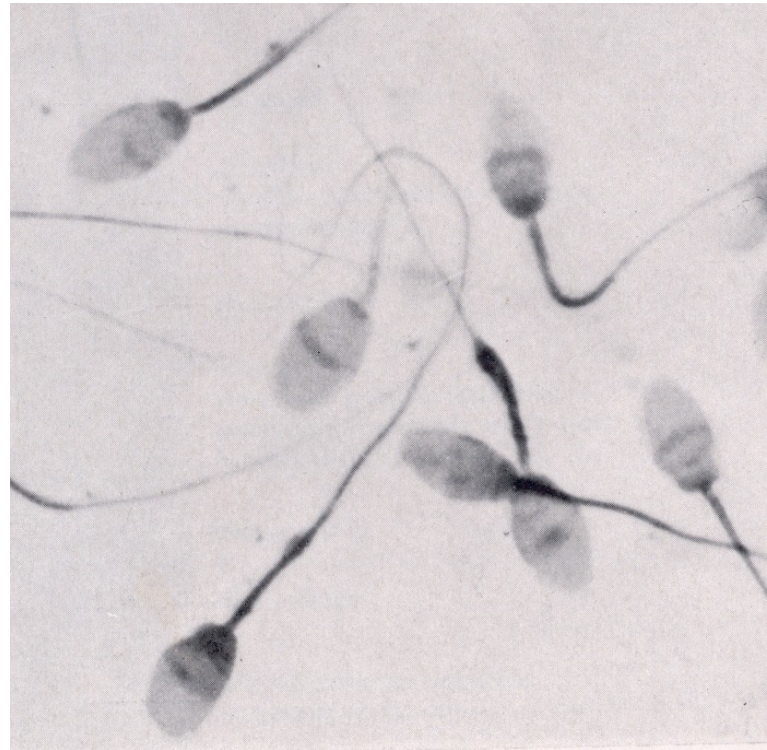
100\$'s per try

12-15,000\$ per try



Sperm Cryopreservation and Banking

- Freezing sperm obtained through masturbation
- May remain frozen indefinitely
- Sperm counts may be low or absent as a result of cancer
- Use in future with intrauterine insemination or IVF
- **Azospemia found in 9.7-17.3% of males referred for banking; 11.9% of men died, 80% within 30 mos**



PROVEN

Testicular Tissue Freezing

Only Pre-pubertal Male Option

- **Experimental**

, no live births to date, but 2 reported cases in boys
(spermatogonia detected in one specimen)

- **Outpatient**

- Fallat, ME et al, 2008
- Orwig, K –ongoing studies

Cost of Sperm Banking

\$700 - 900.00:

Consult – Usually covered by grant funding

Semen analysis

Cryopreservation

STD screening

\$245: Additional samples

\$275: Annual storage at Reprotect – Often discounted if eligible for Verna's purse

Location of Services

UF Health Reproductive Medicine at Springhill:

352 265 6200 or
352 538 3624

Inpatient – based out of
pediatric oncology –
**Navigator – Lauren
Staley, ARNP**

Epic or SPOK order

Epic order

**Apt Request Reproductive Medicine – AKA sperm banking or AKA fertility
Preservation (REF 38)**

How To Reach Us?

UF Health HOPE Network

- Inpatient navigator – Lauren Staley – 8-5 M-F
- Epic – Fertility preservation, rhotona@ufl.edu, 352-265-6200 (UF Reproductive Medicine)

The screenshot displays the Epic inpatient navigator interface. At the top, there are navigation tabs: Paging, On Call (selected), Directory Search, Personal Profile, Scrolling Roster, Global Search, UF Health Directory, and Important Spok Links. Below these are sub-tabs: Today, Search, Block Assignment, Scheduler Assignment, Person Assignment, Calendar Assignment, History, Multiple Assignment, and Quick View. The main content area is titled "On-Call Schedules for Tuesday, October 6". It shows a date field with "10/6/20" and a dropdown menu with "REI 1 - Fertility Preservation Inpatient Consult 1st Call" selected. Below this, there are checkboxes for "Show Current Assignments Only" and "Enable Paging", both of which are checked. A status bar indicates "Displaying 1 - 25 of 629". Below the on-call schedule is a "Staff Message" section. It features a "High Priority" button (up arrow) and a "Low Priority" button (down arrow). The "To:" field contains "Staley, Lauren, APRN" with a close button (x) and a search icon. The "Subject:" field is empty. The "Patient:" field is empty with a search icon and a "Current Patient" button. At the bottom, there is a toolbar with icons for search, undo, redo, help, insert, and a "100%" zoom level dropdown. The "Insert SmartText" button is also visible.

Why Not Do It?

- Cost
- Time
- Fear
- Provider did not mention this option
- Treatment may not impact fertility
- Not interested
- Already started chemotherapy
- Do not plan to have children
- Rather do something after treatment if needed

Questions?

- Reach out to one of the team members if you have questions
- Oncofertility Consortium website
- Alliance for Fertility Preservation website
- UF Reproductive Medicine Website

rhotona@ufl.edu

melbyj@shands.ufl.edu